



Compassion for Life

Great Performance
Attractive Solution



ECO-Green Intelligent CT

High-end Platform Technology

AI Workflow & Easy Operation

Efficient, Stable, Durable



High-end Platform Technology

Modularized Digital Detector

Convert analog signal to digital signal directly

Less signal loss

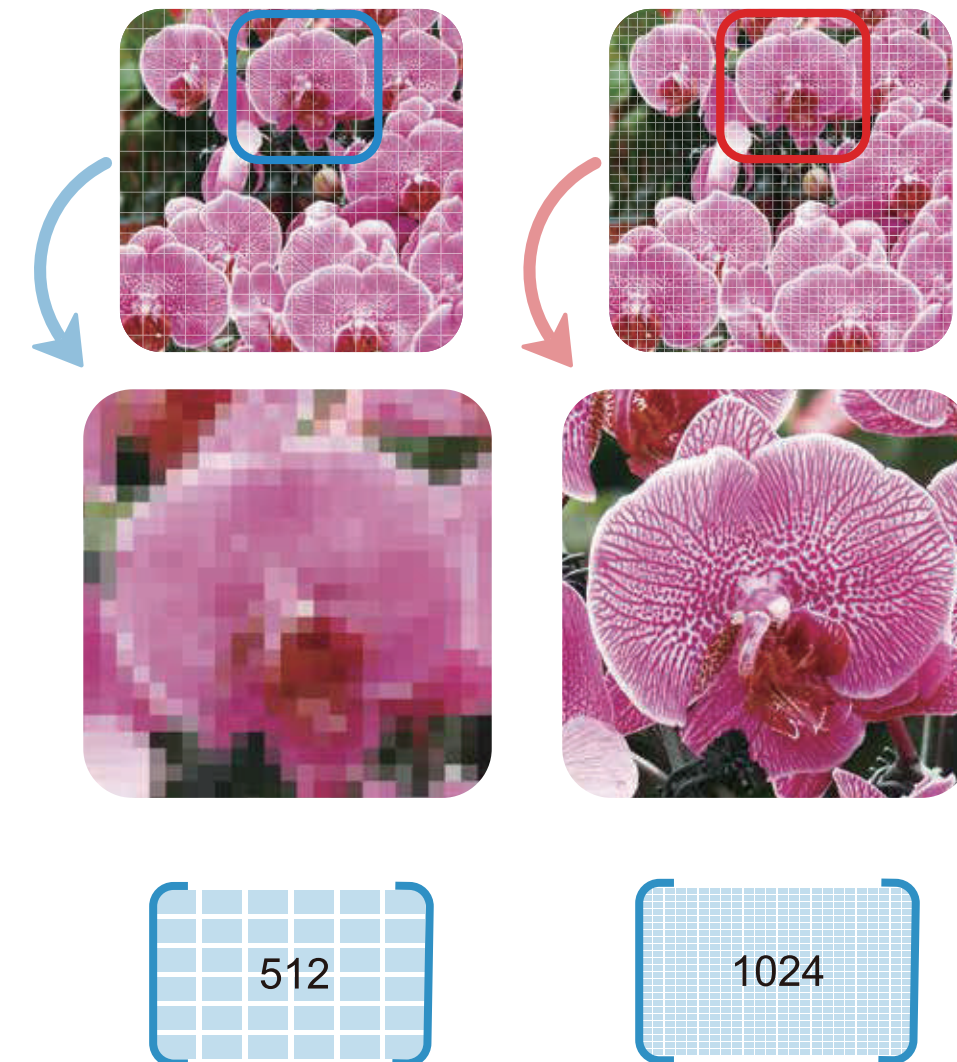
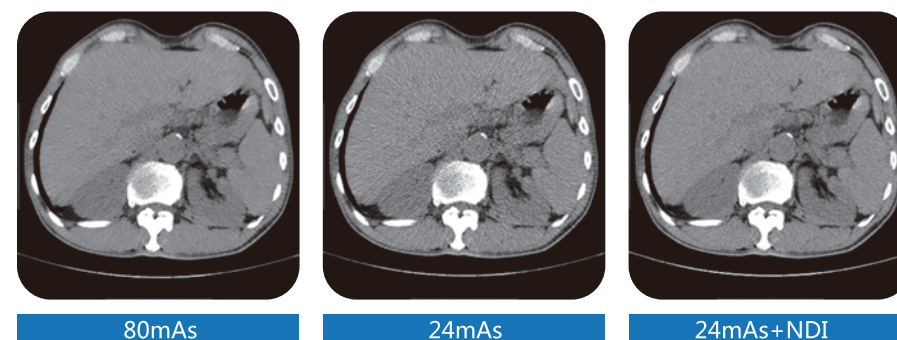
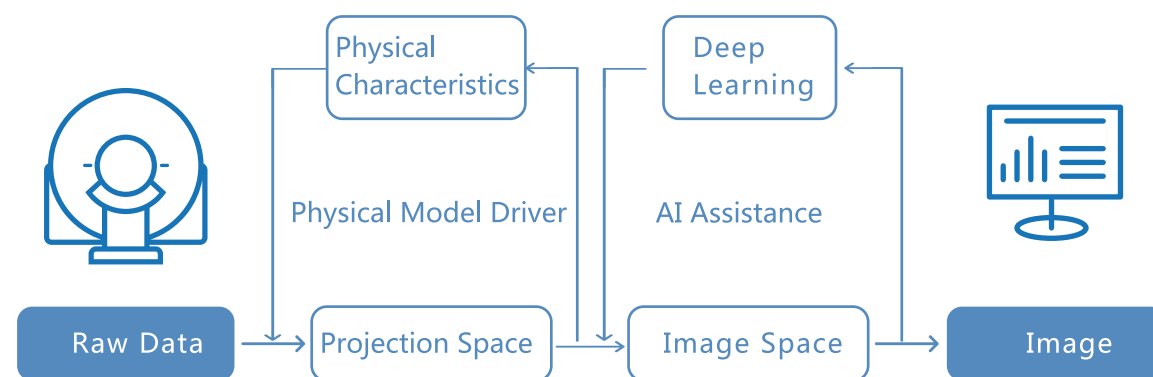
Higher X-ray utilization

Low dose and high definition



NDI (NanoDose Iterative)

The raw data is iterated simultaneously in the projection space and the image space. The projection space iteration process integrates the physical characteristics of the X-tube and the detector, and the image space iteration process is based on the deep learning network of the anatomical structure. NDI+ guarantees the image quality at low dose.



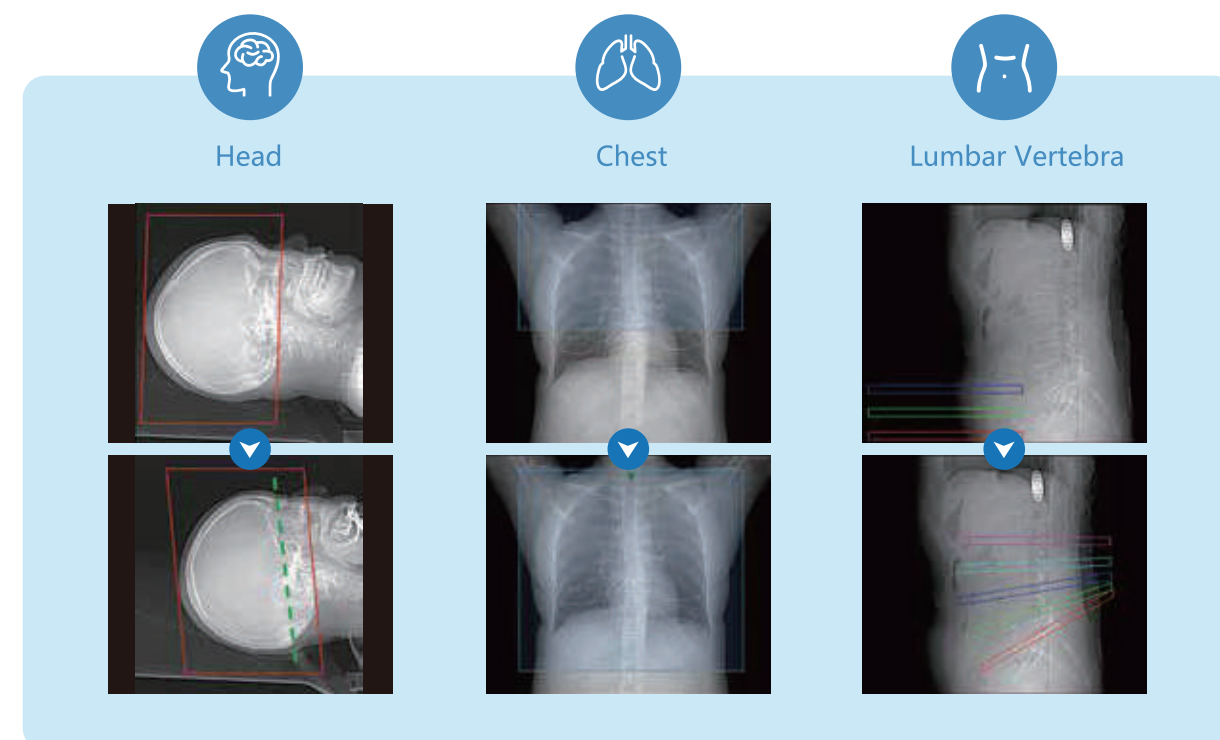
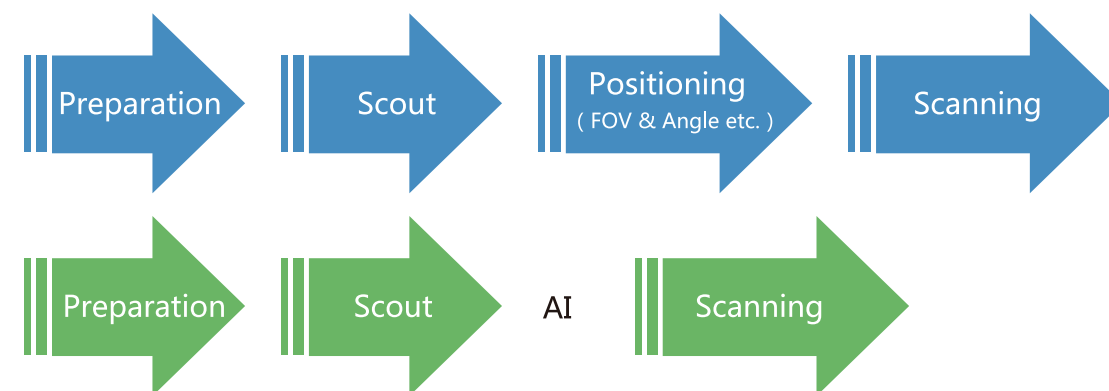
1024×1024 Megapixel

1024×1024 reconstruction matrix can fully display more details of lesions and provide reliable basis for early detection, early diagnosis and early treatment of diseases.

AI Workflow & Easy Operation

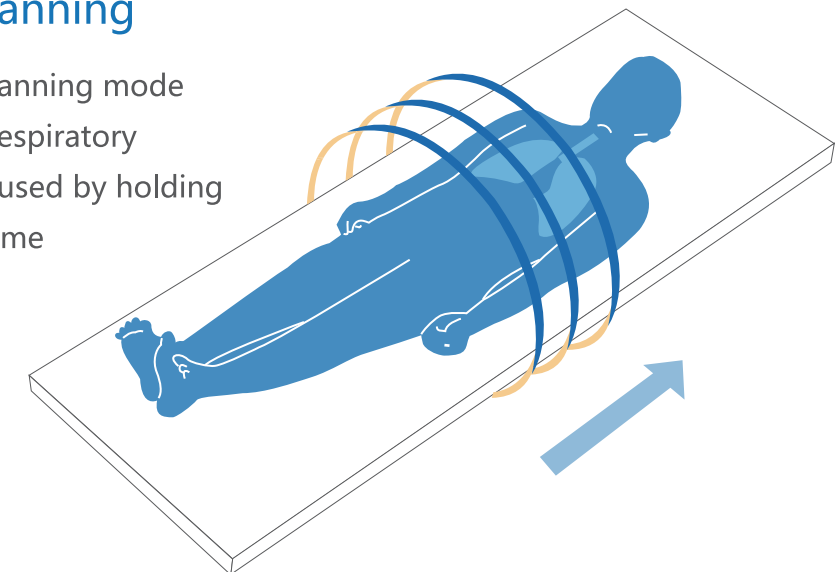
Intelligent position

Save a lot of time and the scanning is more standard and accurate



Intelligent Scanning

Intelligent chest scanning mode can eliminate the respiratory motion artifacts caused by holding breath for a long time



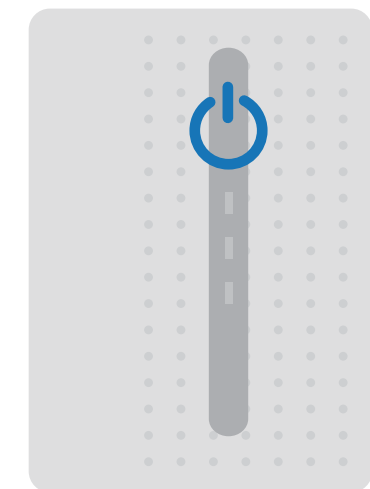
Mobile Operation Panel

Control the machine easily and remotely



One-key Start

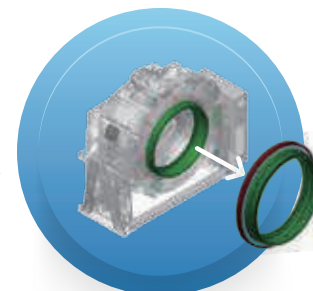
Avoid the misoperation and easy start



Efficient, Stable, Durable

High Precision Bearing

Zero Error and Zero Runout under High Speed Rotation
Achieve Military and Aerospace Level Requirements
Long Service Life and Excellent Stability



The Integrated Casting of Stator and Rotor

Minimum Vibration During Rotation
Minimum Deformation During Rotation



Eco-Green Metal Tube

High efficiency metal tube
Advanced NanoDose Iteration
Effective reduction of scanning dose
Longer service life than normal tube



Energy-Saving

Automatically enter the energy-saving mode in the non scanning state

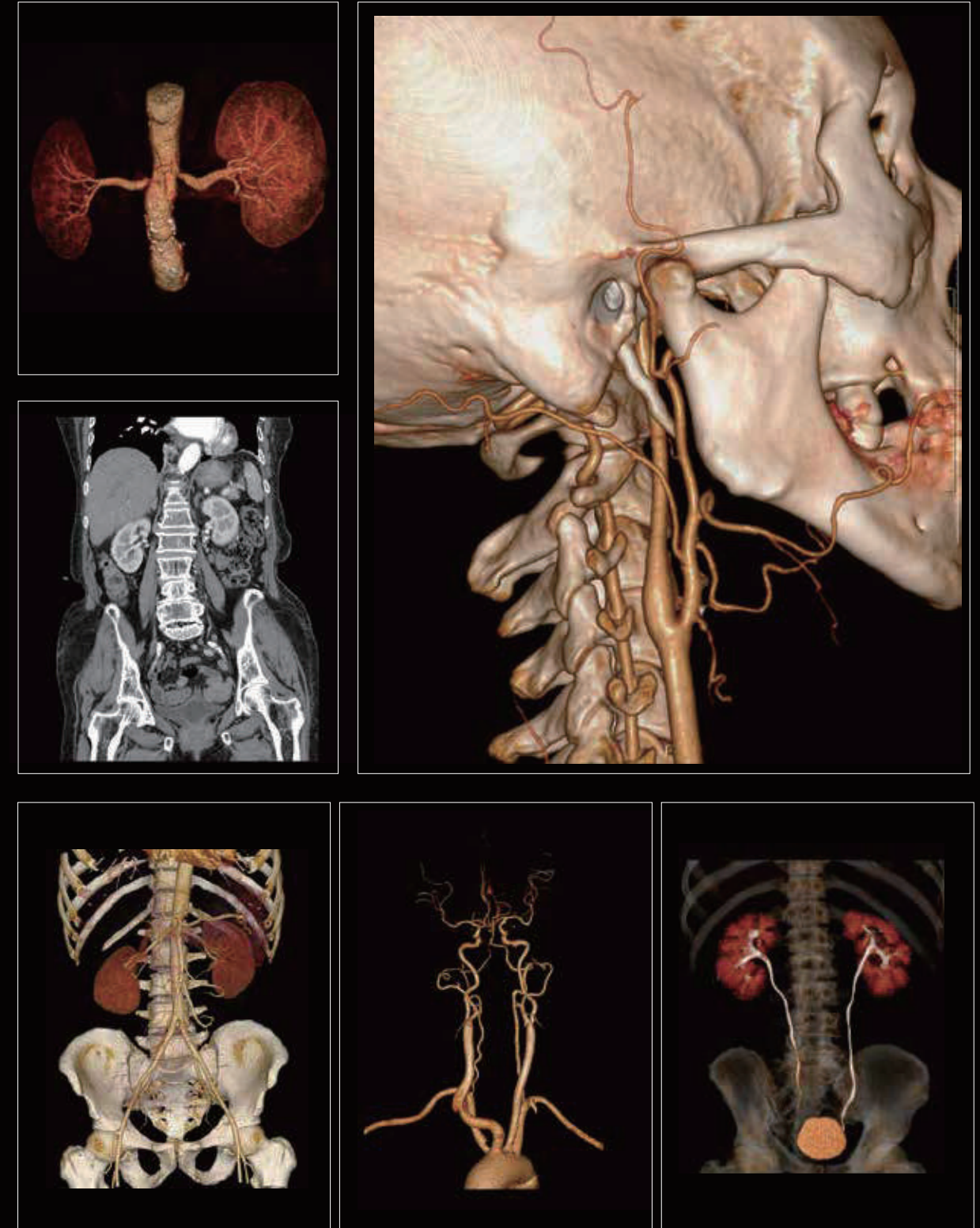
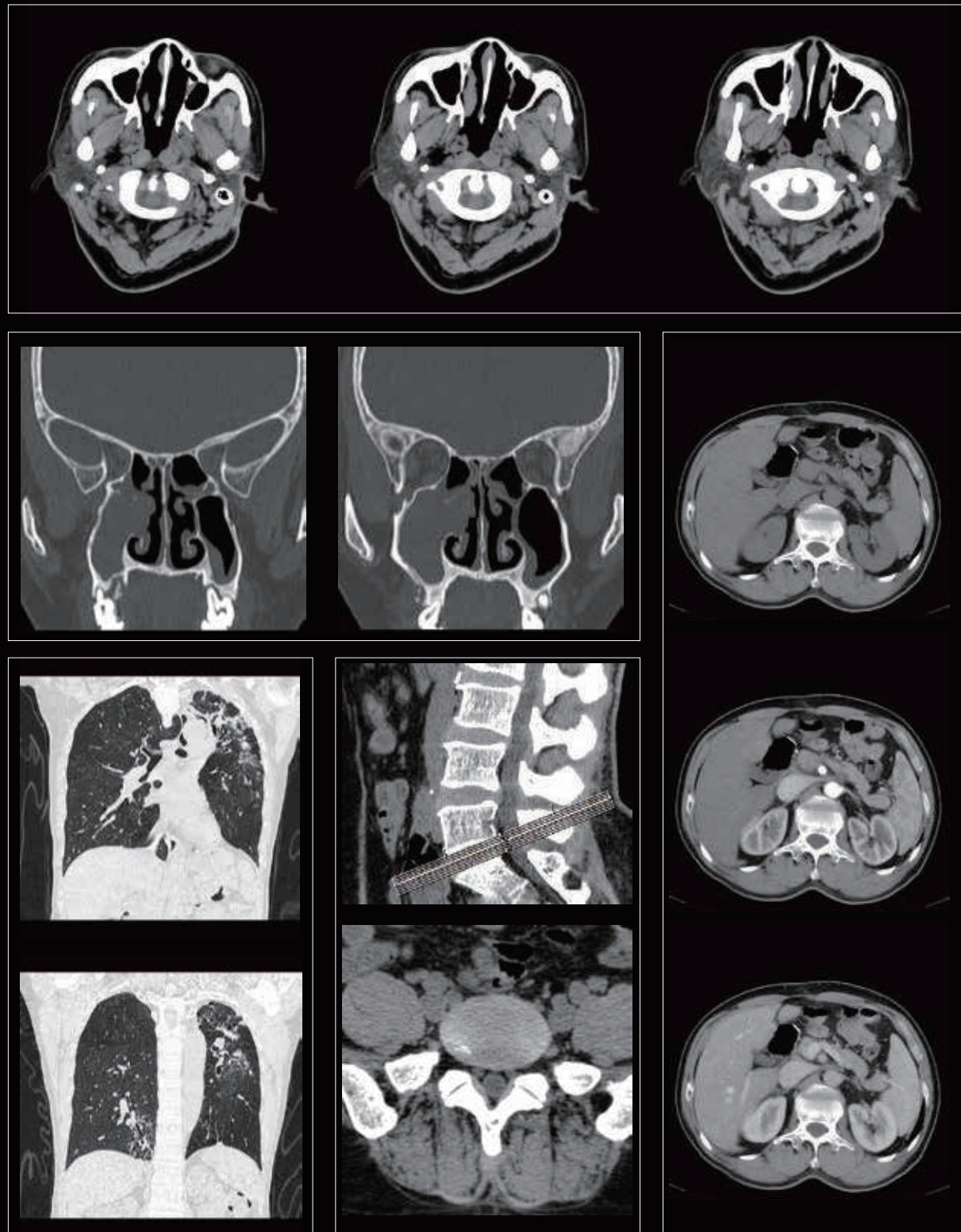


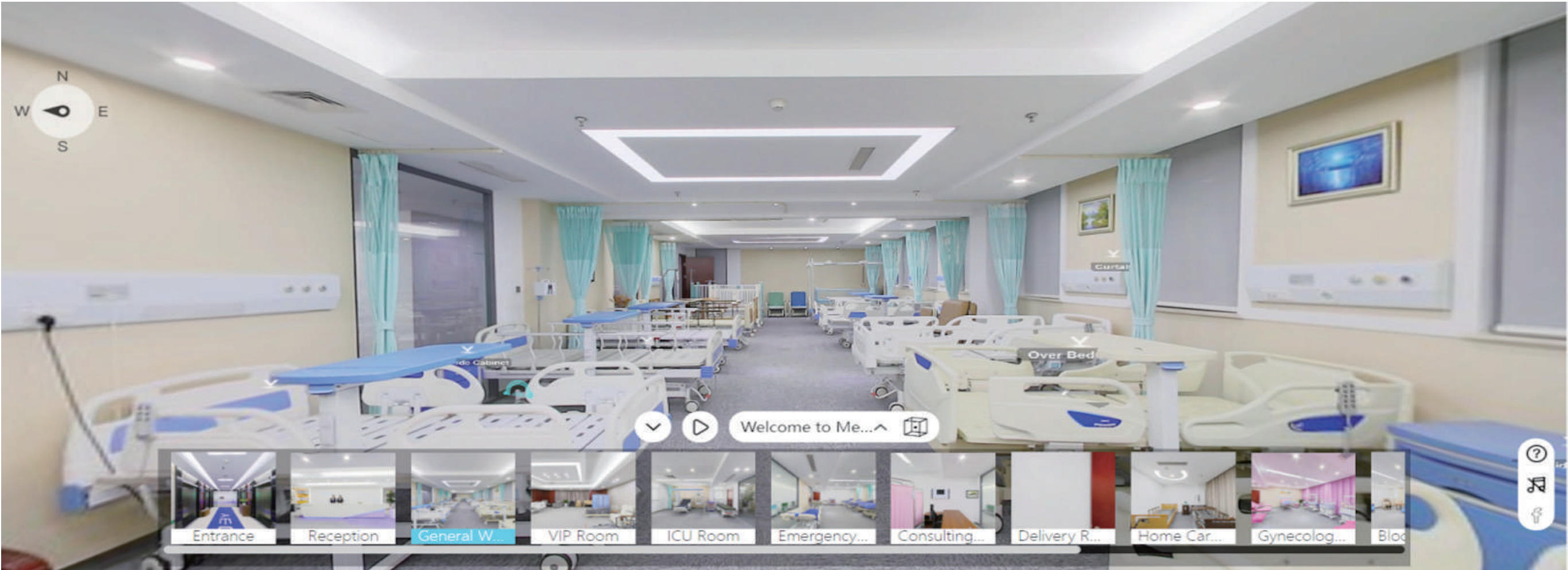
Thermal Airflow Isolation Design

Improve Heat Dissipation Efficiency
Extend the Life of Detector
Ensure the Image Quality







Clinical Application Image





Medwish.com, founded by Jiangsu Medwish Network Technology Co., Ltd in 2018, is one of the largest global B2B marketplaces for medical equipment, financing services, and new hospital project services. There are 10,000 + products, 2000 + factories over there. The key features include:

-  **Full Category Supply Capability**
14 full product categories cover the whole medical industry chain.
-  **Online Payment System**
Support Multiple Payment Systems, including PayPal, T/T, Credit Cards, L/C, etc.
-  **Save time and Money for Your Hospital**
We cut off all the intermediate processes so that you can buy directly from the factory by saving 30-60% of the total production cost for your hospital projects.
-  **Financing Services**
Both order financing and project financing are available. You're able to [apply online](#).



Follow Us



Jiangsu Medwish Network Technology Co., Ltd

Website: www.medwish.com
ADD: Aoyang International Building, Zhangjiagang,
Jiangsu, 215600, China
Tel: 0086 138 1298 8917
Fax: 0086-512-58170725